



MONTHLY MEMBERSHIP PROGRESS REPORT

District 325B1

Results as of: 11/30/2014

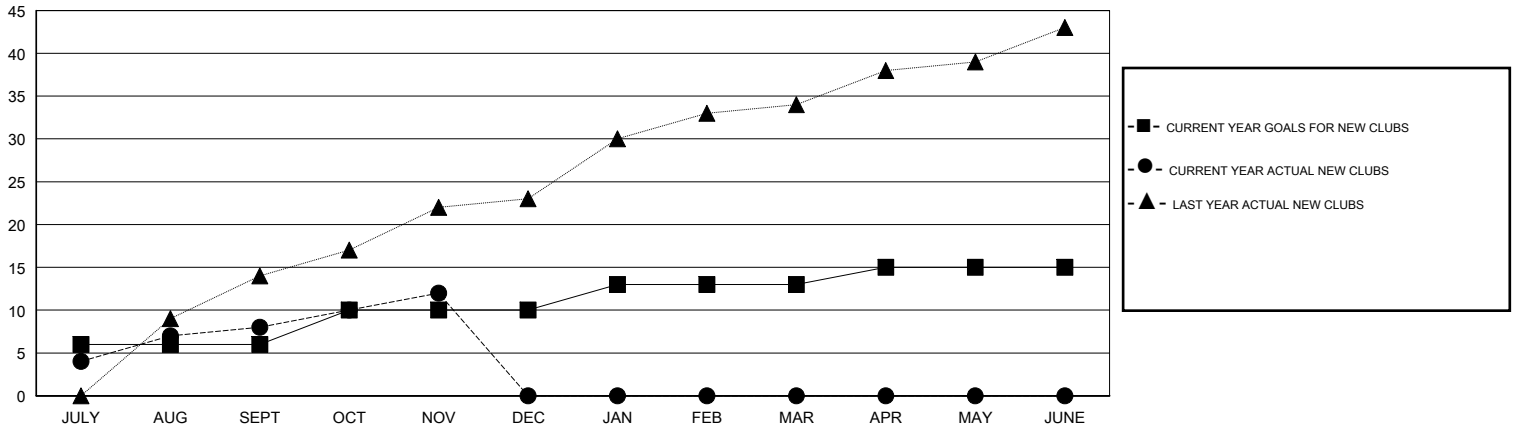
GMT: NAZMUL HAQUE

LOCATION NEPAL

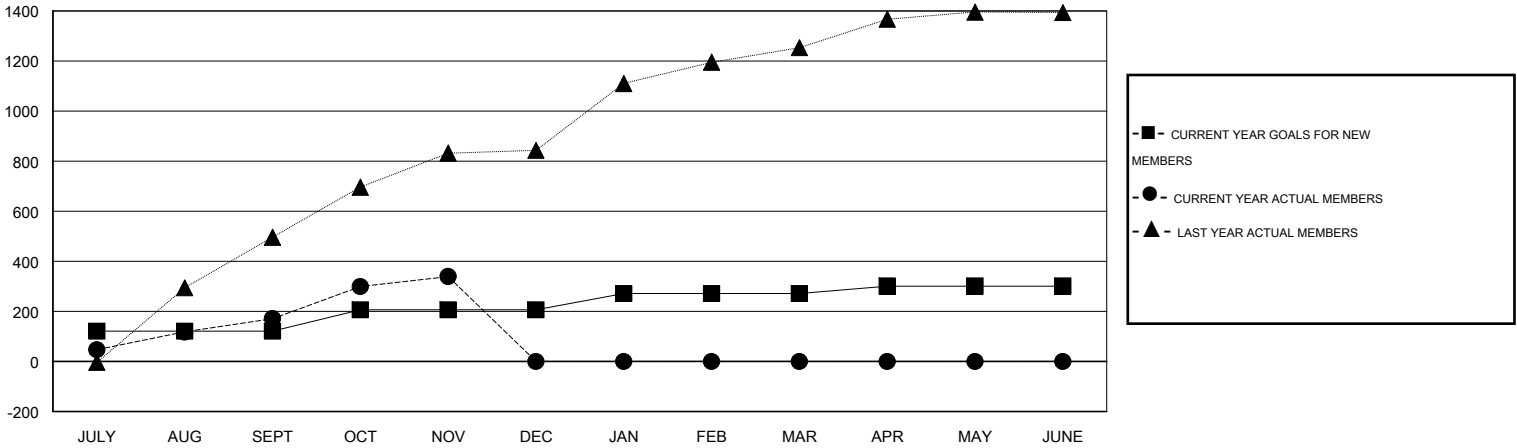
GMT CA 6

Clubs					Members				
RESULTS FOR 2014-2015					RESULTS FOR 2014-2015				
QUARTER	NEW CLUB GOAL	NEW CLUBS	DROPPED CLUBS	NET GAIN/LOSS	QUARTER	NEW MEMBER GOAL	CHARTER AND NEW MEMBERS ADDED	DROPPED MEMBERS	NET GAIN/LOSS
JULY/AUG/SEPT	6	8	0	8	JULY/AUG/SEPT	121	301	130	171
OCT/NOV/DEC	4	4	0	4	OCT/NOV/DEC	85	243	75	168
JAN/FEB/MAR	3	0	0	0	JAN/FEB/MAR	65	0	0	0
APR/MAY/JUNE	2	0	0	0	APR/MAY/JUNE	30	0	0	0

GOALS AND ACTUAL NEW CLUBS CUMULATIVE



GOALS AND ACTUAL MEMBERS CUMULATIVE



DROPPED CLUBS: 0	66 CLUBS OF 163 ADDED 1 OR MORE NEW MEMBERS	<u>GENDER DISTRIBUTION</u>	
<u>DROPPED MEMBERS</u>		MALE	3,965 (82.54%)
DECEASED	1	FEMALE	839 (17.46%)
CLUB CANCELLED	0	FAMILY UNIT MEMBERS 2,393 HEAD OF HOUSEHOLD 888 NON-HEAD OF HOUSEHOLD 1,505	
OTHER	204		
TOTAL	205		
CLICK HERE FOR HEALTH ASSESSMENT DATA			